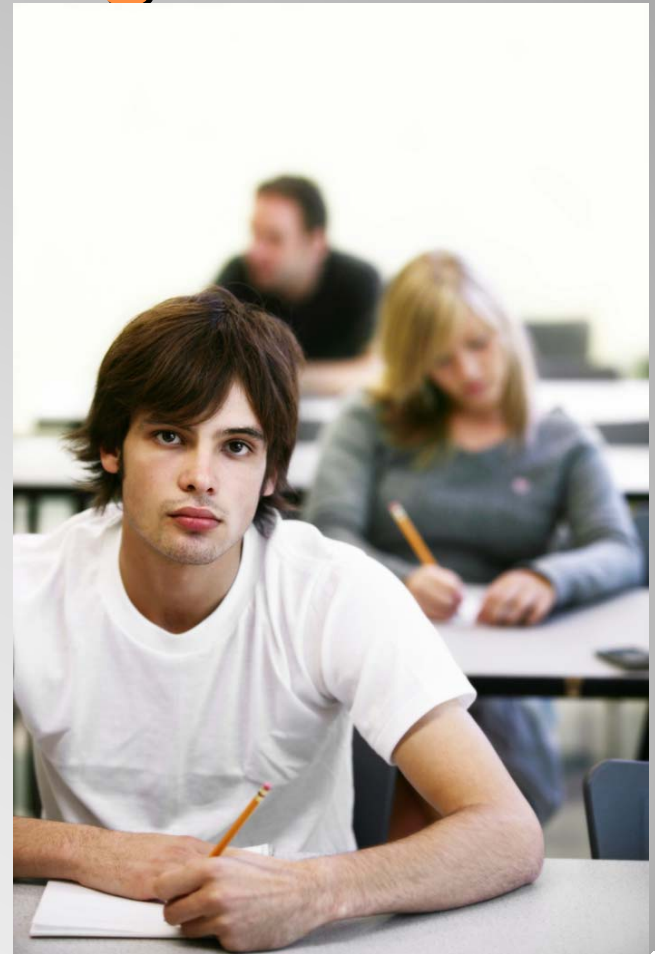


**Post-Secondary
Enrollment Options
(PSEO) and Concurrent
Enrollment (CE)**

Dual Enrollment by Design

- Historically targeted high-achieving students; selective
- Shift to wide-range of students
 - At-risk
 - Low income
 - Low achieving
 - First generation
 - Underrepresented
 - Students taking classes on campus or at high school locations



Structured Support

Improved Academic Skills

Student Success And Motivation

Exposure to Social and Procedural Skills

College Matriculation

College Persistence

Structured Support Initiatives - Students



- Accuplacer testing to ensure proper course placement
- Newsletter
- Website
www.frontrange.edu/highschoolprograms
- Orientations & College 101
- Field trips to campus
- Tutoring (on and off campus)
- Academic Plans & Registration Assistance
- Advising
- Peer Connections
- Computer lab access/workshops
- Continual personal support throughout semester

Structured Support Initiatives - Faculty



- Professional development
- Orientations at high schools
- Summer/Winter Institute
 - Workshops designed to provide information on teaching college-level material to high school students
- Mentorship
 - Qualified instructors are paired with a department chair or lead faculty to ensure integrity of curriculum and instructional quality is maintained.
- Observations

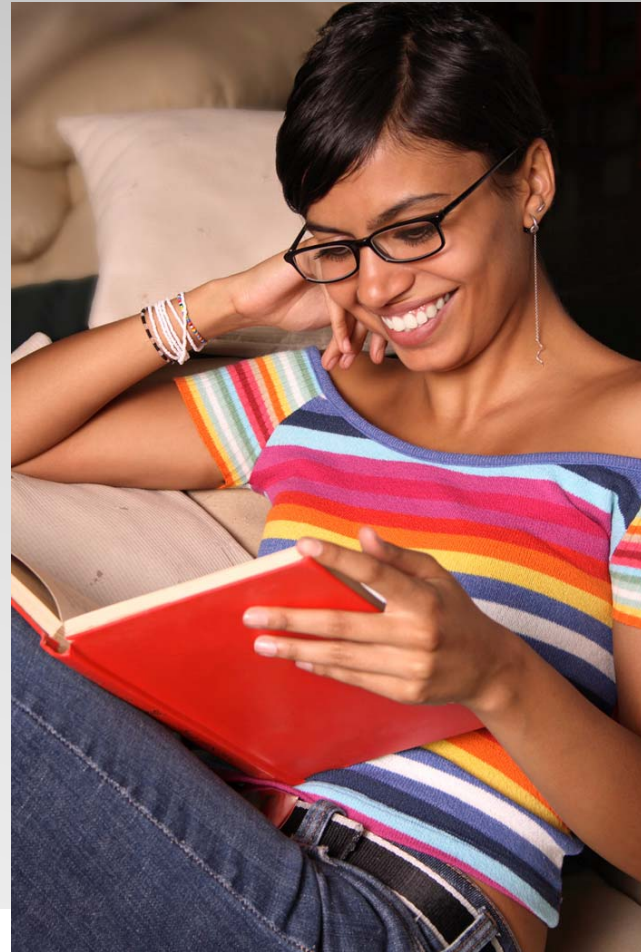
Counselor Feedback



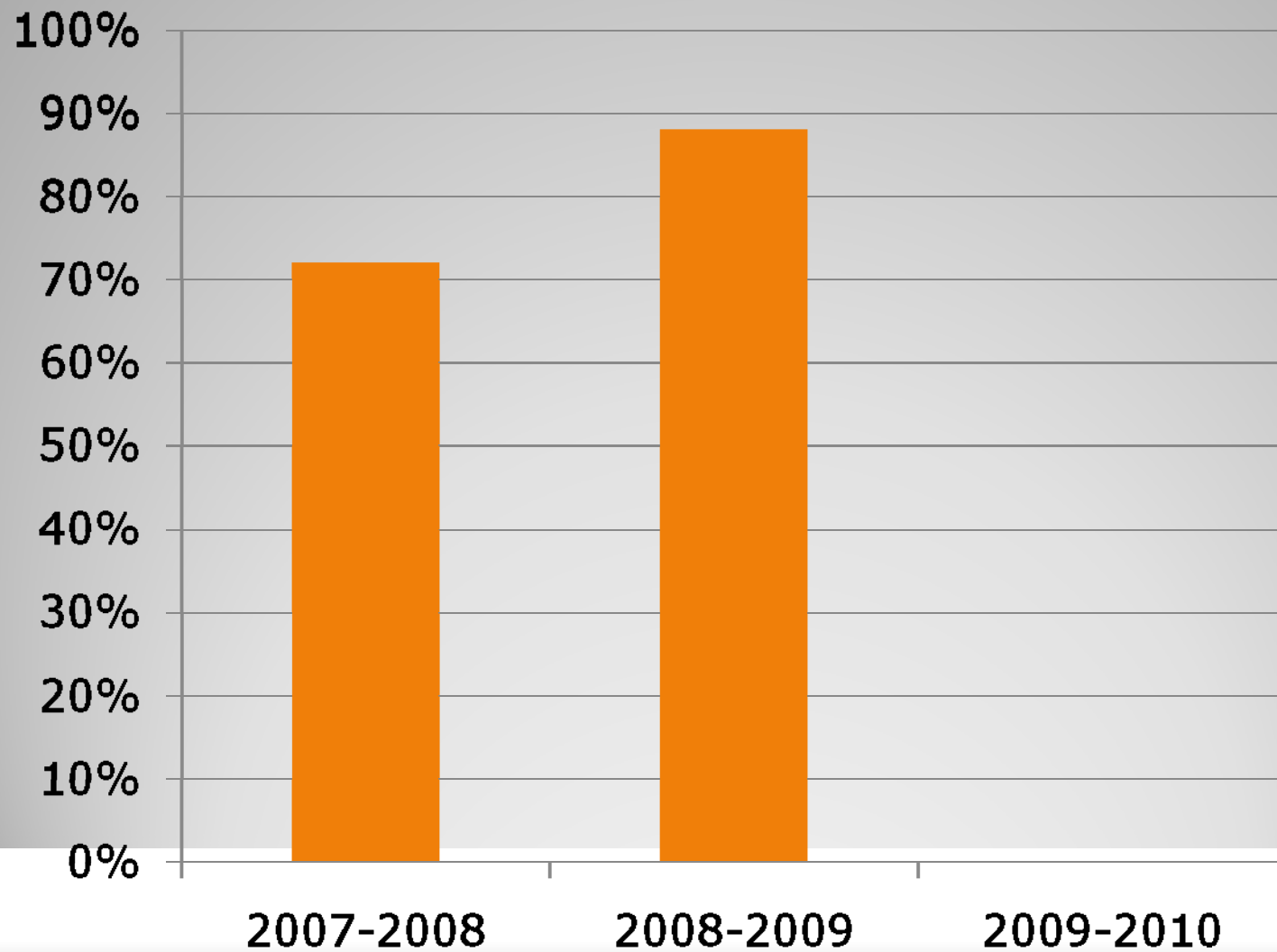
- PSEO gives students the exposure and instills confidence in their abilities to succeed in college.
- Students learn to navigate the college system in a supportive environment.
- Students gain the academic “soft skills” necessary to survive post-high school (study skills, note taking, time management, deadlines)

Student Perspective

- “My favorite part was the experience I gained. I now know what college is like and can be ready for it when I go.”
- “I learned how to manage my time...and how to talk to my professors when I need something.”
- “Thank you very much to people that made this possible for us, and the people that helped us to expand our joy of learning. This really helped me a lot.”



Pass Rates



Future of PSEO and Concurrent Enrollment

Intent of HB 1319

- Developed and supported by P-20 Council
- Much confusion over what was allowable under PSEO, Fast Track, and Fast College Fast Jobs
- Designed to clarify and “clean-up”
- Purpose: shift the focus from isolated experiences for well-qualified students only to all students who are ready to move towards a degree or certificate
- Replaces PSEO, Fast Track, and Fast College Fast Jobs by 2012.

PSEO vs. CE

PSEO

- Must be Junior or Senior
- 5th Year not allowed
- Remedial not allowed
- Somewhat limited to 2 classes per semester
- Summer term not allowed

CE

- 9th grade up to age 21
- 5th year eligible for ASCENT
- Remedial allowed in 12th grade only
- Unlimited number of classes through CE
- Summer ok

PSEO vs. CE (cont.)

PSEO

- Student/Parent pays; district reimburses
- Must have signed PSEO form on file (each enrolled semester)
- Permission to Release Info on file
- No academic plan required

CE

- District pays; no reimbursement necessary
- Must have new CE form on file (each enrolled semester)
- CE form incorporates Permission to Release
- High school must complete ICAP for each CE student

Tuition & Fees

PSEO

- Resident tuition for all PSEO courses
- Students/parents pay tuition and fees;
 - district reimburses tuition (not fees) upon successful completion of course

CE

- Resident tuition for all CE courses
- School district pays tuition
 - Student / parent must reimburse district if unsuccessful in course

COF

PSEO

- Students eligible for COF through PSEO
 - Up to age 18 without documentation
- Verified through DMV

CE

- Students eligible for COF through CE
 - up to age 21 without documentation
- Verified by SASID

ASCENT

- 5th year program
- Qualifications:
 - Student has completed or is on track to complete 12 college credits by the end of 12th grade
 - Is NOT in need of remediation – tests at college level in Reading, English, and Math
 - Accepted into a postsecondary degree program
 - Selected for participation in ASCENT by HS principal

Cooperative Agreements (MOU)

- Must have signed cooperative agreement in place with the school district for student to be recognized as CE or ASCENT
- Cooperative Agreement outlines the following:
 - Eligibility
 - Enrollment
 - Academic Credit
 - Registration
 - Financial Provisions / Tuition & Fees
 - FTE Status
 - Faculty & Use of District Facilities

Where to go from here...

Impact of Concurrent Enrollment on your school/district...

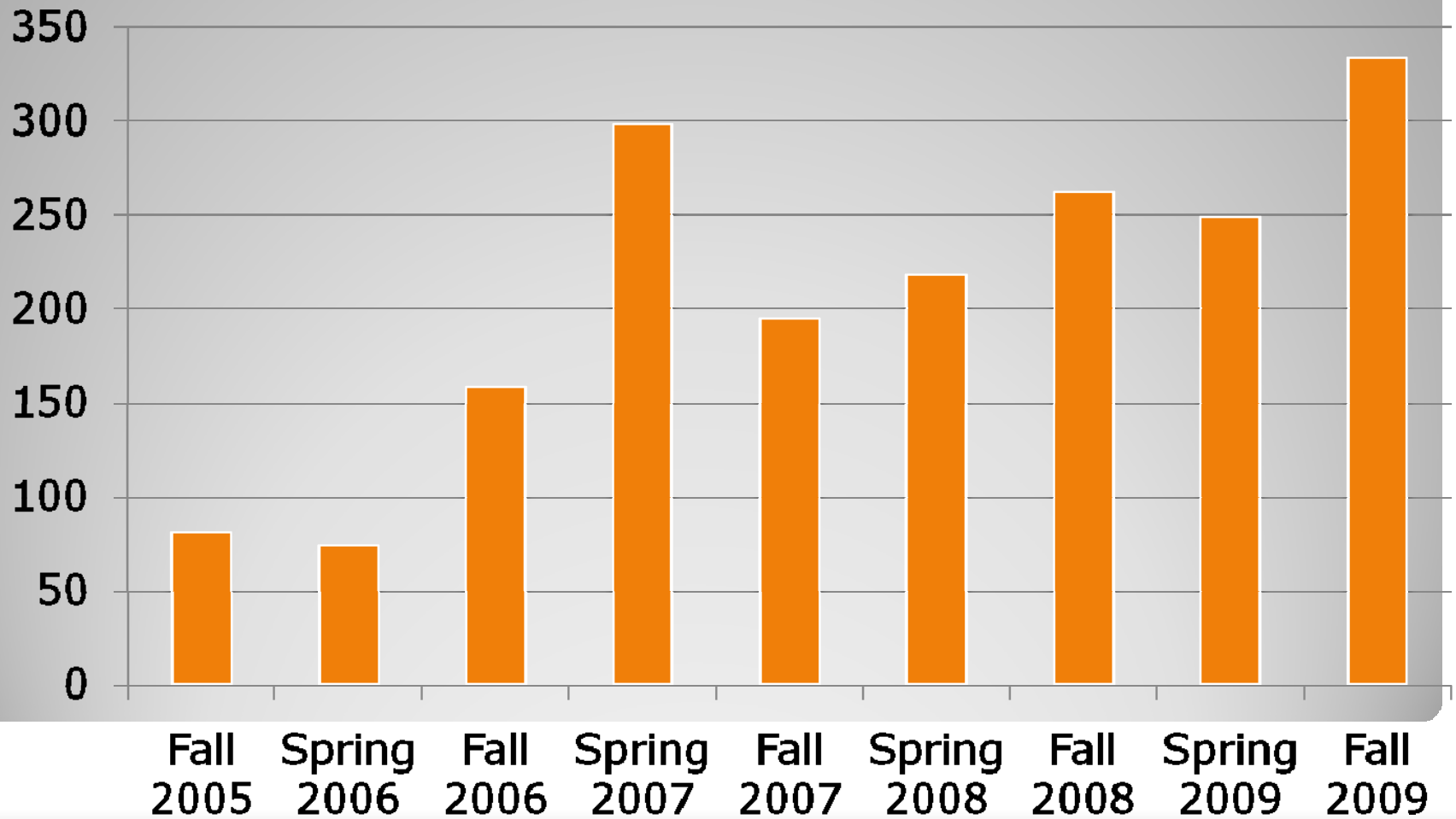
Q & A

Questions:

**Sheena TeBeest at
sheena.tebeest@frontrange.edu**

PSEO Enrollment at Westminster Campus

By students



PSEO Enrollment at Westminster Campus

By credits

